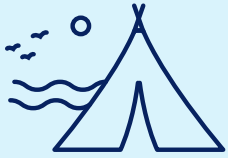


ACTIVITIES RESUME

LET'S CONTINUE TO PROTECT OURSELVES!

All activity sectors have reopened

EXCEPTION



Regular and sleepover summer camps

Companies, stores and leisure activities

Businesses and stores can resume their activities everywhere in Québec **WHILE GIVING PREFERENCE TO TELE-WORK WHENEVER FEASIBLE.**

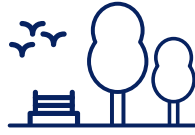
Homes and institutions for seniors

Visits are authorized in homes and institutions for seniors and vulnerable individuals where no outbreak has occurred.

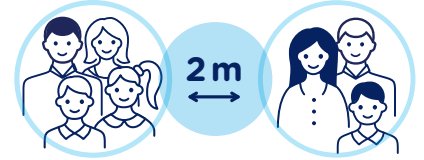
General information—Gatherings and audiences



Stay 2 metres away from anyone else not living in the same home.



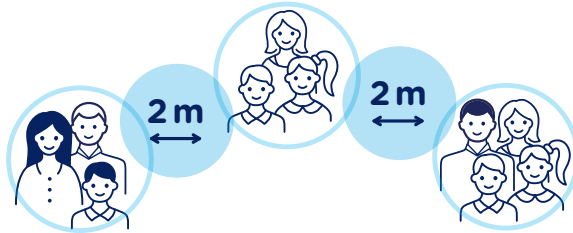
Give preference to outdoor gatherings.



People living at the same address can form a bubble, in which physical distancing may be less than 2 metres.

The 2-metre distancing rule remains in effect for contact with people outside the bubble.

Gatherings in a PRIVATE location



Maximum of 10 people from no more than 3 households

Audiences in a PUBLIC location

INDOOR PUBLIC SETTINGS

A limit of **250 people** applies to the following locations and activities:

- Public hearing venues
- Cinemas
- Theatres
- Rented halls, including community halls
- Places of worship
- Attending indoor audiovisual productions and/or shoots
- Attending indoor performance recordings
- Attending indoor amateur sports training or events

EXCEPTION

1.5-metre physical distancing may apply for the following:

- Public hearing venues
- Cinemas
- Theatres
- Classrooms for general adult education, vocational training and college and university courses

OUTDOOR PUBLIC SETTINGS

A limit of **250 people** applies to social, commercial, religious, cultural, sports, leisure, entertainment and similar events.

The organizers must ensure that the capacity of the site allows a distance of 2 metres to be maintained between the people or households gathered.

EXCEPTION

The 250-person limit does not apply to people who remain in their vehicles, peaceful demonstrations and events taking place on separate sites.

EDUCATIONAL SETTINGS

• DAYCARES AND KINDERGARTENS FOR 4 AND 5 YEAR OLDS

Physical distancing will not be required between the student and the educational staff.



• PRESCHOOL, ELEMENTARY AND SECONDARY SCHOOL

No physical distancing will be required between students in the same stable group. However, distancing of 1 metre will be maintained between students from different stable groups when they move around common areas, including hallways.



Students from grade **5 elementary through Secondary V** must wear a face mask during movements outside classrooms and in common areas of the school in the presence of other students who are not in their class cohort, as well as on school and public transportation.

• GENERAL ADULT EDUCATION AND VOCATIONAL TRAINING

Physical distancing of 2 metres must be respected at all times. Students and adult learners must wear face coverings at all times, except when seated in a classroom with a minimum distance of 1.5 metre between them.

IMPORTANT: Hygienic directives must be complied with at all times.



Cough into your sleeve



Wash your hands



Keep your distance



Cover your face

For people age 10 and over, wearing a face covering is mandatory on public transit and in most enclosed and partially enclosed public places.